

TRADE ESSENTIALS

FIRST FOR TOOLS,
CONSUMABLES AND
WORKSHOP EQUIPMENT

ISSUE 60

1 NOVEMBER 2023 – 31 JANUARY 2024

**NEW
PRODUCT**

**That looks
SCHMICK!**

SCHMICK MICK

**Don't just Wash it,
Protect your Asset**



**3.7M Multifold Aluminium Ladder
with Bonus 12 Pocket Tool Apron**



BONUS

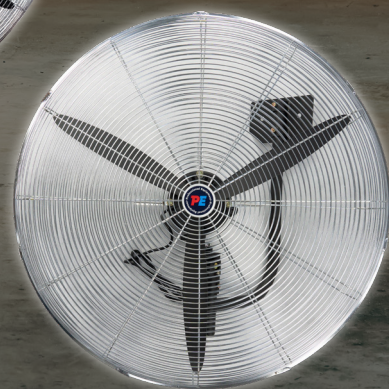


**COOL
for the
SUMMER**

**YOUR
INDUSTRIAL
COMMERCIAL FAN
SOLUTION!**



**750mm
Pedestal & Wall Fan**



IF YOU HAVEN'T GOT IT, YOU CAN'T USE IT!

RECYCLABLE
PACKAGING

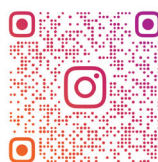
BIODEGRADABLE



MADE IN AUSTRALIA

SCHMICK MICK

Instagram



SCHMICKMICK_NZ

That looks 'SCHMICK'!

THE RANGE

500ml Like New Vinyl & Plastic Restorer

Code No. SM1005

Schmick Mick Like New Vinyl & Plastic Restorer is a truly exceptional product that offers a wide range of benefits for revitalizing and restoring vinyl and plastic surfaces.

Directions: Spray directly on surface or directly into a micro fibre cloth and wipe evenly over surface.



\$25.22
\$29.00 inc GST

500ml Ceramic Spray

Code No. SM1008

Schmick Mick Ceramic Protection is a breeze to apply. Its easy-to-use application process that allows you to achieve professional results without the need for specialized tools or equipment.

Directions: Spray on surface and gently wipe over evenly with a micro fibre cloth. For best results apply after washing your vehicle, bike or boat.

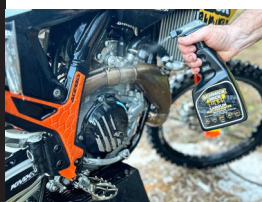


\$43.43
\$49.84 inc GST

750ml Lanolin Rust Preventor

Code No. SM1006

\$44.35
\$51.00 inc GST



Schmick Mick Lanolin Spray creates a protective barrier on various surfaces, shielding them from moisture, rust, corrosion, and other environmental elements. This protective layer helps to extend the lifespan of your equipment, tools, and machinery. Excellent Lubrication, Water and Moisture Repellent, Long lasting Performance and Environmentally Friendly.

Directions: Spray all over surface liberally and leave to create a protective barrier against moisture and rust.

750ml Tyre Shine

Code No. SM1007

\$38.26
\$44.00 inc GST



Ultimate Showroom Finish, Effortless Application for Professional Results and Long Lasting Protection Against Dirt and Grime Schmick Mick Tyre Shine is not just about aesthetics; it's also about performance! Our advanced formulation is designed to repel dirt, dust, and grime, keeping your vehicle looking pristine for longer periods. Enjoy the peace of mind knowing that your investment is protected against the elements, and you won't have to worry about frequent cleaning sessions. Experience a cleaner and more polished ride that radiates elegance and sophistication on every journey.

750ml Glass Cleaner

Code No. SM1009

\$25.22
\$29.00 inc GST



Schmick Mick Clear Vision Glass Cleaner uses an advanced formula which guarantees streak free results, ensuring that your windows, mirrors, and glass surfaces sparkle like never before. Powerful solution is perfect for a wide range of applications, including automotive windows, household mirrors, glass furniture, and more. It's a must-have for every vehicle owner of in the home.

Directions: Spray on surface liberally and wipe clean with a clean paper towel or a micro fibre cloth.

1L Blizzard Foam Wash

Code No. SM1001

Schmick Mick Blizzard Foam is not your ordinary cleaning solution. It is a game-changer, specifically designed to tackle the toughest cleaning challenges with ease.

Directions: Pour 3 to 4 caps full into the Foaming Gun or Cannon and add water. Shake well and apply with hose or pressure washer. Allow solution to sit for 40 second, agitate with sponge or cloth and rinse. Can also be used diluted into a bucket of water and applied with a sponge.



\$42.61
\$49.00 inc GST



1L Ceramic, Hydro Foam Wash

Code No. SM1002K

Schmick Mick Ceramic/Hydro Foam helps shield your surfaces from future stains and grime accumulation in addition to providing superb cleaning results. Because of the protective layer that is created by its ceramic technology, dirt is repelled, making it easier to clean with each wash.

Directions: Add 3 to 4 caps full to a Schmick Mick Foaming Cannon or Gun and fill with water. Shake well and press trigger and apply all over surface. Let sit for 40 seconds and sponge in to agitate dirt and grime then hose off.



\$33.91
\$39.00 inc GST



**Bonus
Key Ring**

Grime Degreaser

Schmick Mick degreaser, the best remedy for difficult cleaning problems. Designed to remove grease accumulation and leave your surfaces clean and grime-free. Our degreaser is also designed not to fade metal components.

Directions: Spray on surface and leave for 1 minute to allow the degreaser to penetrate. Use hose or pressure washer to rinse the area clean. For tougher areas you may need to use a sponge or scrubbing brush.



SM1003 - 1L
\$33.91 (ex GST)
\$39.00 (inc GST)

SM3003 - 20L (Heavy Duty)
\$179.00 (ex GST)
\$205.85 (inc GST)



Salt Destroyer / Engine Flush

Schmick Mick Salt Destroyer effortlessly breaks down and dissolves salt deposits, eradicating them from causing short and long term damage of your equipment.

Directions: To remove salt on the surface apply as an all over spray in a Foaming Gun or Cannon. For an engine flush add 40mls to the Salt Wash Adaptor and connect directly to the Jetski or engine muffs.



SM1004 - 1L
\$33.91 (ex GST)
\$39.00 (inc GST)

SM1004-5 - 5L
\$86.09 (ex GST)
\$99.00 (inc GST)



ACCESSORIES

100ml Salt Wash Adaptor

Code No. SM2001



\$25.22
\$29.00 inc GST

Introducing the Schmick Mick Salt Wash Adaptor, the best way to easily clean out your engine to remove all salt residue.

Foaming Gun - Garden Hose

Code No. SM2002



\$77.39
\$89.00 inc GST

The Schmick Mick Foaming Gun is a fantastic tool for performing a high-quality car wash in your driveway. This is a must have item for any vehicle lover or weekend driver thanks to its user friendly design and impressive foaming abilities.

Under Vehicle Washer - Pressure Washer

Code No. SM2003



\$155.65
\$179.00 inc GST

The Schmick Mick Under Vehicle Pressure Washer is the ideal tool for easily cleaning those challenging spaces underneath your vehicle. No hunching over battling with conventional cleaning techniques. It has never been simpler to get a thorough and spotless clean with the Schmick Under Vehicle Pressure Washer.

Blizzard Foam Gun - Pressure Washer

Code No. SM2004



\$122.17
\$129.00 inc GST

The Schmick Mick Blizzard Foaming Cannon is designed to create a thick clinging foam that encapsulates your vehicle, allowing the cleaning solution to penetrate deep into every crevice and effectively loosen dirt, grime, and contaminants. This ensures a thorough and efficient clean that leaves your car looking showroom ready.

135 Pc Grab Kit Assortment

Code No. WD912GK135W3

Worm Drive Assortment

- All Stainless Steel (430 Grade)
- Non-perforated band with rolled edges
- 8 popular sizes
- Compact housing design
- Manufactured to German DIN Standards

Band Width (mm)	Band Width	Diameter	Qty
WD9	9mm	8-16mm	20
WD9	9mm	12-20mm	20
WD12	12mm	16-27mm	20
WD12	12mm	20-32mm	15
WD12	12mm	25-40mm	15
WD12	12mm	30-45mm	15
WD12	12mm	32-50mm	15
WD12	12mm	40-60mm	15

\$229.00
\$263³⁵ inc GST



135 Pc Grab Kit Assortment

Code No. WD912GK135W4

Worm Drive Assortment

- All Stainless Steel (304 Grade)
- Non-perforated band with rolled edges
- 8 popular sizes
- Compact housing design
- Manufactured to German DIN Standards

Band Width (mm)	Band Width	Diameter	Qty
WD9	9mm	8-16mm	20
WD9	9mm	12-20mm	20
WD12	12mm	16-27mm	20
WD12	12mm	20-32mm	15
WD12	12mm	25-40mm	15
WD12	12mm	30-45mm	15
WD12	12mm	32-50mm	15
WD12	12mm	40-60mm	15

\$339.00
\$389⁸⁵ inc GST



180 Pc Ezi-Pak Grab Kit Assortment

Code No. WD912GK180W3

Supplied in a top quality portable case with translucent polycarbonate lid, click locks and triple hinges. The case also suits many mobile technician & workshop racking systems (i.e. Fischer's Ezi-Pak Module Frames). Case Size: W 370 x D 432 x H 85mm.

Band Width (mm)	Capacity (min-max) - Ø	Qty
WD9	8-12	20
WD9	8-16	20
WD9	12-20	20
WD12	16-27	20
WD12	20-32	20
WD12	25-40	20
WD12	30-45	20
WD12	32-50	20
WD12	40-60	20

\$299.00
\$343⁸⁵ inc GST



KALE is certified with ISO TS 16949, ISO 9001, ISO 14001 management systems as per the expectations of the global automotive industry.

180 Pc Ezi-Pak Grab Kit Assortment

Code No. WD912GK180W4

Supplied in a top quality portable case with translucent polycarbonate lid, click locks and triple hinges. The case also suits many mobile technician & workshop racking systems (i.e. Fischer's Ezi-Pak Module Frames). Case size: W 370 x D 432 x H 85mm.

Band Width (mm)	Capacity (min-max) - Ø	Qty
WD9	8-12	20
WD9	8-16	20
WD9	12-20	20
WD12	16-27	20
WD12	20-32	20
WD12	25-40	20
WD12	30-45	20
WD12	32-50	20
WD12	40-60	20

\$385.00
\$442⁷⁵ inc GST



KALE is certified with ISO TS 16949, ISO 9001, ISO 14001 management systems as per the expectations of the global automotive industry.

180 Pc Ezi-Pak Grab Kit Assortment

Code No. WD9GK180W2

Supplied in a top quality portable case with translucent polycarbonate lid, click locks and triple hinges. The case also suits many mobile technician & workshop racking systems (i.e. Fischer's Ezi-Pak Module Frames). Case size: W 370 x D 432 x H 85mm.

Band Width (mm)	Capacity (min-max) - Ø	Qty
WD9	8-12	20
WD9	8-16	20
WD9	12-20	20
WD12	16-27	20
WD12	20-32	20
WD12	25-40	20
WD12	30-45	20
WD12	32-50	20
WD12	40-60	20

\$199.00
\$228⁸⁵ inc GST



KALE is certified with ISO TS 16949, ISO 9001, ISO 14001 management systems as per the expectations of the global automotive industry.

102 Pc Wall Merchandiser with Stock

Contents (for both Merchandisers)

Band Width (mm)	Capacity (min-max) - Ø	Qty
WD9	8-12	10
WD9	8-16	10
WD9	12-20	10
WD12	16-27	8
WD12	20-32	8
WD12	23-35	8
WD12	25-40	8
WD12	30-45	8
WD12	32-50	8
WD12	40-60	8
WD12	50-70	8
WD12	60-80	8



WD912WM102W3 - W3

\$180.00
\$207⁰⁰ inc GST

WD912WM102W4 - W4

\$245.00
\$281⁷⁵ inc GST

Kale Clamps

- Burr-free and convex band edges.
- 100% traceability on the product.
- High clamping force with low tightening torque.
- Light product, easy assembly and space saving with compact housing and screw design.
- Stronger and durable with the mechanically locked single piece design of housing.

W1 - Mild Steel Zinc	Code	Band Width	Qty	Diameter	Tightening Torque	ex GST	inc GST
	WDI21627W1R	12mm	4	16-27mm	5.0Nm	\$6.00	\$6.90
	WDI22032W1R	12mm	4	20-32mm	5.0Nm	\$6.00	\$6.90
	WDI22335W1R	12mm	2	23-35mm	5.0Nm	\$4.00	\$4.60
	WDI22540W1R	12mm	2	25-40mm	5.0Nm	\$4.80	\$5.52
	WDI23045W1R	12mm	2	30-45mm	5.0Nm	\$5.50	\$6.33
	WDI23250W1R	12mm	2	32-50mm	5.0Nm	\$5.50	\$6.33
	WDI24060W1R	12mm	2	40-60mm	5.0Nm	\$5.80	\$6.67
	WDI25070W1R	12mm	2	50-70mm	5.0Nm	\$6.50	\$7.48
	WDI26080W1R	12mm	2	60-80mm	5.0Nm	\$7.00	\$8.05
	WDI27090W1R	12mm	2	70-90mm	5.0Nm	\$7.00	\$8.05
	WDI280100W1R	12mm	2	80-100mm	5.0Nm	\$7.50	\$8.63
W3 - All Stainless	Code	Band Width	Qty	Diameter	Tightening Torque	ex GST	inc GST
	WDI21627W3R	12mm	4	16-27mm	5.0Nm	\$8.00	\$9.20
	WDI22032W3R	12mm	4	20-32mm	5.0Nm	\$8.00	\$9.20
	WDI22335W3R	12mm	2	23-35mm	5.0Nm	\$5.00	\$5.75
	WDI22540W3R	12mm	2	25-40mm	5.0Nm	\$5.00	\$5.75
	WDI23045W3R	12mm	2	30-45mm	5.0Nm	\$5.50	\$6.33
	WDI23250W3R	12mm	2	32-50mm	5.0Nm	\$5.50	\$6.33
	WDI24060W3R	12mm	2	40-60mm	5.0Nm	\$5.50	\$6.33
	WDI25070W3R	12mm	2	50-70mm	5.0Nm	\$6.50	\$7.48
	WDI26080W3R	12mm	2	60-80mm	5.0Nm	\$7.00	\$8.05
	WDI27090W3R	12mm	2	70-90mm	5.0Nm	\$7.50	\$8.63
	WDI280100W3R	12mm	2	80-100mm	5.0Nm	\$7.50	\$8.63
W4 - All Stainless Marine	Code	Band Width	Qty	Diameter	Tightening Torque	ex GST	inc GST
	WDI21627W4R	12mm	4	16-27mm	5.0Nm	\$10.00	\$11.50
	WDI22032W4R	12mm	4	20-32mm	5.0Nm	\$10.00	\$11.50
	WDI22335W4R	12mm	2	23-35mm	5.0Nm	\$6.50	\$7.48
	WDI22540W4R	12mm	2	25-40mm	5.0Nm	\$6.50	\$7.48
	WDI23045W4R	12mm	2	30-45mm	5.0Nm	\$6.50	\$7.48
	WDI23250W4R	12mm	2	32-50mm	5.0Nm	\$6.50	\$7.48
	WDI24060W4R	12mm	2	40-60mm	5.0Nm	\$7.00	\$8.05
	WDI25070W4R	12mm	2	50-70mm	5.0Nm	\$8.00	\$9.20
	WDI26080W4R	12mm	2	60-80mm	5.0Nm	\$8.00	\$9.20
	WDI27090W4R	12mm	2	70-90mm	5.0Nm	\$9.50	\$10.93
	WDI280100W4R	12mm	2	80-100mm	5.0Nm	\$9.50	\$10.93



C-Jaw Plier with Hammer Head

Code No. SHPCHI0



\$27.00
~~\$31.05~~ inc GST

- Opening: 40mm
- V-Groove on top jaw
- Non-Slip grip marks on top and bottom jaws for positive gripping.
- Secure Adjustment Bar minimizes bar pop-outs. Minimal handle spread, even at the maximum opening, make these Pliers easier to grasp, lock, and release.
- Quick release trigger.
- Unique crank handle for fast, easy jaw opening and pressure adjustment.
- Crank up, or lessen the torque by inserting a screwdriver.
- Hanging hole for pegboard storage.
- M10 Threaded hole for mounting grounding lug
- OAL: 300mm
- Cr-V - Brazed Jaw for durability
- Wire Cutter

C Jaw Pliers

Features

- Unique large size
- V-Groove on top jaw
- Wire Cutter
- Secure Adjustment Bar minimizes bar pop-outs. Minimal handle spread, even at the maximum opening, make these Pliers easier to grasp, lock, and release.
- Quick release trigger.
- Unique crank handle for fast, easy jaw opening and pressure adjustment.

SHPCJ100 - 300mm	\$22.00 (ex GST)	\$25.35 (inc GST)
• Opening: 41mm	• OAL: 300mm	
SHPCJ120 - 360mm	\$30.00 (ex GST)	\$34.50 (inc GST)
• Opening: 55mm	• OAL: 360mm	
SHPCJ50 - 180mm	\$14.00 (ex GST)	\$16.10 (inc GST)
• Opening: 26mm	• OAL: 180mm	
SHPCJ70 - 245mm	\$18.00 (ex GST)	\$20.70 (inc GST)
• Opening: 40mm	• OAL: 245mm	

Locking Chain Pliers



Clamp odd shaped multiple items. Hold two workpieces, or a group of materials securely in place while you weld. Adjust tension with crank handle. Quick release trigger.

SHPFC1024 - 600mm	\$65.00 (ex GST)	\$74.75 (inc GST)
SHPFC1036 - 910mm	\$59.00 (ex GST)	\$67.85 (inc GST)
SHPFC1048 - with Crank Handle	\$69.00 (ex GST)	\$79.35 (inc GST)

Pipe Pliers



The convenient way to hold round or square tubes for butt-welding.

Features

• Top V-Pad: Fixed	• Bottom V-Pad: Fixed	• Thread: M8
SHPG622V - 150mm	\$29.00 (ex GST)	\$33.35 (inc GST)
• OAL: 150mm	• Bottom V-Pad: Fixed	
• Throat Depth: 50mm	• Opening: 25-50mm	
SHPG634V - 216mm	\$40.00 (ex GST)	\$46.00 (inc GST)
• OAL: 216mm	• Throat Depth: 76mm	
• MAX Clamping Capacity: 50-76mm		
SHPG635V - 216mm	\$40.00 (ex GST)	\$51.75 (inc GST)
• OAL: 216mm	• Throat Depth: 76mm	
• Bottom V-Pad: 0° & 45° rotatable		

4 in 1 Clamp Kit

Code No. SHUD45M-C3



\$49.00
~~\$56.35~~ inc GST

The 4 in 1 F Clamps are the most versatile Sliding Arm Clamps in the market. All Strong Hand Tools F Clamps are made of high quality heat treated steel & nickel/chrome plated for strength & durability.

Come with one F clamp & a 4 in 1 Accessory Kit (one Extender Block & one V Pad).

- Clamping Pressure: 227kg
- Throat Depth: 76mm
- Clamping Capacity: 101.5-152.5mm
- Equipped with Standard Pad
- * Do not use with impact wrenches.

Adjustable Inside / Outside Angle Magnets



- Hold and position sheet metal, round pipes, square, angled or flat stock.
- The Inside / Outside Angle Magnets are constructed from two independent rectangular magnets for consistent, undiminished magnetic force when both sides are attached to workpieces.
- Use mounting holes to link two magnets together for use as fixturing elements.
- Description: Adjustable • Angles: 30-270°

SHMLA450 - 120 x 120 x 18mm	\$35.00 (ex GST)	\$40.25 (inc GST)
• Height: 120mm	• Width: 120mm	
• Thickness: 18mm	• Mag. Pull Force: 12kg	
SHMLA600 - 156 x 156 x 20mm	\$45.00 (ex GST)	\$51.75 (inc GST)
• Height: 156mm	• Width: 156mm	
• Thickness: 20mm	• Mag. Pull Force: 15kg	

Inside / Outside Magnet (Combo Pack)

Code No. SHMLDT350



- Hold and position sheet metal, round pipes, square, angled or flat stock.
- The Inside / Outside Angle Magnets are constructed from two independent rectangular magnets for consistent, undiminished magnetic force when both sides are attached to workpieces.
- Use mounting holes to link two magnets together for use as fixturing elements.
- Use hex hole on magnet for breakaway leverage.

\$34.00
~~\$39.10~~ inc GST

Adjust-O Dual Switch Magnet Squares



For professional jobs that demand strong hold down forces. Hold flat and round metal work pieces.

- Two On/Off switches for independent operation.
- Turn the magnets Off when setting up, turn On when you're ready to work. Easy and safe set-up!
- Precision machined flat and V-surfaces are ideal for round and square tubing, angle, and flat stock.

SHMS2-80 - 55kg	\$255.00 (ex GST)	\$293.25 (inc GST)
• Max. Pull Force: 55kg	• Dimension: 152 x 152 x 38mm	
SHMS2-90 - 120kg	\$510.00 (ex GST)	\$586.50 (inc GST)
• Max. Pull Force: 120kg	• Dimension: 197 x 197 x 48mm	

Mini Torpedo Mag Level

Code No. SHLM2422



\$69.00
~~\$79.35~~ inc GST

The use-anywhere, view anywhere compact magnetic level.

- Compact & Light Weight
- V-Groove for round parts
- Angles 0, 90°
- Z-Axis Bubble Pod
- 4 Magnets
- Dimensions 100 x 32 x 25mm

COOL for the SUMMER

PROVEN QUALITY RELIABLE PERFORMANCE FULLY APPROVED

Designed for industrial use, solid construction with long life direct drive commercial motor. These industrial fans are excellent for work sites, workshops, warehouses, garages or sheds.

750mm Pedestal Fan w/ Heavy Duty Cast Iron Base

PE1015

Note: These fans are designed for industrial/commercial use, not recommended for home use. Certified to AS/NZS 60335

\$417.00
\$479.55 inc GST



- 240V / 50Hz 280W
- 3 Speed Motor - 1400rpm (max)
- 750mm Alloy 3-Blade Fan
- Air Flow Delivery upto 290m³/min
- dB(A) - 86
- 0° to 90° Oscillating Angle
- Metal Oscillating Gears

750mm Wall Fan w/ Heavy Duty Wall Bracket

PE1026



\$407.00
\$468.05 inc GST

- 240V / 50Hz 280W
- 3 Speed Motor - 1400rpm (max)
- 750mm Alloy 3-Blade Fan
- Air Flow Delivery upto 290m³/min
- dB(A) - 86
- 0° to 90° Oscillating Angle
- Metal Oscillating Gears

200mm 145W Industrial Ventilation Fan

Code No. PE1140



- dB(A) - 63
- 240V / 50Hz 145W
- Air delivery: 25m³/min
- Static Pressure - 245Pa
- 200mm Alloy Multi Blade Fan (2850rpm)
- Complete with 5M of Flexible Ducting (-30° to +80°C)
- Overall Dimensions - H 330 x W 260 x L 350mm

\$505.00
\$580.75 inc GST

300mm 320W Industrial Ventilation Fan

Code No. PE1025



- dB(A) - 71
- 240V / 50Hz 320W
- Air Delivery - 65m³/min
- Static Pressure - 373Pa
- 300mm Alloy Multi Blade Fan (2850rpm)
- Complete with 5M of Flexible Ducting (-30° to +80°C)
- Overall Dimensions - H 410 x W 330 x L 425mm

\$596.00
\$685.40 inc GST

400mm 1000W Industrial Ventilation Fan

Code No. PE1056



- dB(A) - 80
- Air Delivery - 96m³/min
- Static Pressure - 700Pa
- 240V / 50Hz 1000W
- 400mm Alloy Multi Blade Fan (2800rpm)
- Complete with 5M of Flexible Ducting (-30° to +80°C)
- Overall Dimensions - H 580 x W 550 x L 360mm

\$1085.00
\$1247.75 inc GST

450mm 1450W Industrial Ventilation Fan

Code No. PE1141



- dB(A) - 83
- 240V / 50Hz 1450W
- Air Delivery - 162m³/min
- Static Pressure - 972Pa
- 450mm Alloy Multi Blade Fan (2800rpm)
- Complete with 5M of Flexible Ducting (-30° to +80°C)
- Overall Dimensions - H 520 x W 480 x L 460mm

\$1195.00
\$1374.25 inc GST

16 Drawer Tool Box Stacker Combination

Code No. PE6075

6 Drawer Top Tool Box
+
3 Drawer Middle (Stacker) Tool Box
+
7 Drawer Roller Cabinet



- Cold Rolled Steel (0.6 & 0.8mm)
- Black Grain & Silver Gloss Powder Coating
- Double Wall Construction for Extra Strength
- Central Locking System w/Key Lock.
- Heavy Duty Ball Bearing Drawer Sliders
- PE Drawer Liners 2.5mm

\$1099.00
\$1263⁸⁵ inc. GST

6 Drawer Top Tool Box

Code No. PE6055



• Dimensions – W 660 x D 307 x H 380mm

\$299.00
\$343⁸⁵ inc. GST

9 Drawer Top Tool Box

Code No. PE6070



• Dimensions – W 660 x D 307 x H 434mm

\$399.00
\$458⁸⁵ inc. GST

3 Drawer Middle (Stacker) Tool Box

Code No. PE6060



• Dimensions – W 670 x D 320 x H 270mm

\$229.00
\$263³⁵ inc. GST

7 Drawer Roller Cabinet

Code No. PE6065



• Dimensions w/out Casters – W 680 x D 460 x H 859mm

\$729.00
\$838³⁵ inc. GST

3.7M Multifold Aluminium Ladder

Code No. PE8925

\$227.00

\$261⁰⁵ inc GST



This multi purpose folding ladder is an all in one ladder system with 14 configurations. The multifold ladder is constructed of high grade aluminium and supports up to 120kg. When not in use, the step ladder folds flat for easy transport or storage. Easily converts to a stepladder, wall ladder, scaffold, workbench and etc. Conforms to AS/NZS 1892.1.

Specification:

- 120kg Load Capacity
- High Grade Aluminium Construction
- Auto Lock Hinges
- Max extended Height: 3.7M
- Platform Height: 1.03M
- 'A' Step Ladder Height: 1.8M
- Folded Size (for storage): H 1030 x W 540 x D 280mm



**Buy PE8925 & Receive
12 Pocket Tool Apron
(KUAP1429) FREE**

3 Shelf Steel Service Trolley

Code No. PE6004

\$194.00

\$223¹⁰ inc GST



- 3 Tier 100kg Capacity
- 75mm Soft Castors (2 x fixed, 2 x swivel)
- Overall Dimensions - L 735 x W 380 x H 760mm
- Net Weight - 15.0kg

3 Shelf Steel Service Trolley

Code No. PE6005

\$284.00

\$326⁶⁰ inc GST



- Tool trays for quick access to frequently used items
- Includes soft foam tray liners
- Four swivel casters, two are lockable
- * Tools not included

3 Drawer Rolling Mechanics Seat

Code No. PE1020

\$222.00

\$255³⁰ inc GST



- Capacity - 182kg (400lbs)
- 3 Drawer Tool Chest With Smooth Roller Ball Bearing Slides
- 2 Fold-Down Side Trays With Magnetic Pads
- Think Padded Seat Cushion
- Oversized 3" Solid PVC Casters
- Maximum Drawer Capacity 9.7kg
- Dimensions: L 673 x W 359 x H 419mm

Folding Padded Auto Panel Support Frame

Code No. PE6034

\$82.00

\$94³⁰ inc GST



Supports body panels and other objects for sanding, grinding, welding, assembling, painting, refinishing & upholstery.

- Sturdy 1" galvanised tubular steel frame.
- Holds a max 225kg (500lb)
- Height adjusts from 840-1100mm.
- Width from 380-860mm.
- Easy folding for compact storage.
- 9mm thick foam padding for protecting panels, parts etc.
- Net Weight: 6.5kg

Supplied flat packed, assembly required.

Low Profile Mechanics Creeper

Code No. PE1023

\$79.00

\$90⁸⁵ inc GST



High-impact moulded plastic creeper board let's you work under vehicles with ease. Low profile design to provide greater clearance.

- One Piece High Impact Polymer Plastic
- Padded Head Rest
- Two Moulded Tool Trays
- Dimensions: L 1000 x W 480 x H 115mm
- Oil / Fuel Resistant
- Six 75mm Swivel Castors
- Capacity: 150kg (300lbs)

Knife & Tool Sharpener

Code No. WSKTS2-I



FEATURES

- Pro - Level Sharpening Technology
- New improved precision sharpening guide to ensure that you get the proper angle every time. Quickly toggle between the 25° angle for outdoor and pocket knives and the 20° angle for thinner blades and kitchen knives
- New Sharpening Guide design has scratch resistant leather linings to protect blade faces.
- New two speed motor, low speed gives more control when sharpening a knife yet still provides all the power you need for heavier sharpening and grinding yet still provides all the power you need for heavier sharpening and grinding tasks on tools like lawnmower blades, axes and other common lawn & garden tools.
- Easily replaceable abrasive grit belts
- Heavy-duty manufacture

Contents

- 1x Adjustable Knife Sharpening Guide (20° Kitchen and 25° Outdoor) with Serrated Knife Guide and Scissor Guide
- 6 x Abrasive Belts: 2x P80 Coarse Belt, 2x P220 Medium Belt, 2x 6000 Fine Honing Belt

\$270.00
\$310.50 inc GST

Knife & Tool Sharpener - 'Ken Onion' Edition

Code No. WSKTS-KO

\$510.00
\$586.50 inc GST



Expertly designed features include:

- An adjustable sharpening guide to produce precise edge bevels from 15° to 30°
- Premium flexible abrasive belts to deliver a strong, long lasting razor-sharp edge
- A variable speed motor to handle every sharpening task, from grinding to honing

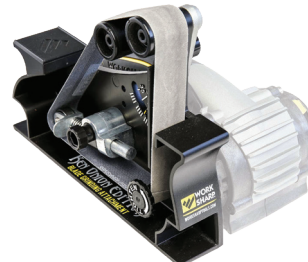
Contents:

- WSKTS-KO Machine
- 5 Pce abrasive belt kit : P120 extra coarse, X65 coarse, X22 medium, X4 fine, 6000 extra fine
- Adjustable Knife Sharpening Guide 15° to 30°
- User's Guide & Instructional DVD

Blade Grinder Attachment - Ken Onion Edition

Code No. WSSAKO81112

\$219.00
\$251.85 inc GST



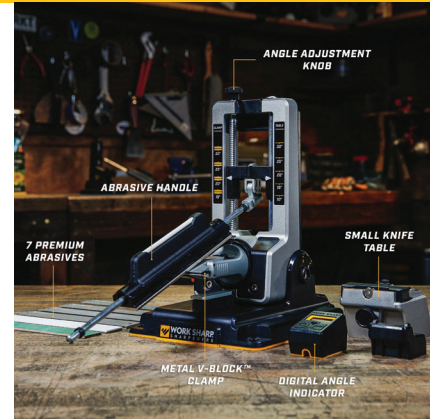
- Cool cutting, engineered, long life 1" x 18" belts for shaping, sharpening, honing and stropping
- 1pc Norton Norax X65 (equivalent to P220)
- 1pc Norton X22 (equivalent to P1000)
- 1pc Norton X4 (equivalent to P3000)
- 1pc Micro Mesh P12000

Professional Precision Adjust Knife Sharpener

Code No. WSBCHPAJ-PRO

- Professional-level sharpener with metal construction
- Includes seven (7) abrasive grits: 220, 320, 400, 600 & 800 diamond, Fine Ceramic, Leather Strop
- Adjustable Angle from 15-30° with included digital angle indicator.
- Small knife table attachment allows sharpening small 'pen knives' to angles as low as 15°
- Abrasives are user replaceable
- Sharpens Kitchen Knives, Pocket Knives, Hunting Knives, and Outdoor Knives.
- Abrasive Size: 1" x 6"

\$756.00
\$869.40 inc GST



Benchtop Precision Adjust Elite Knife Sharpener

Code No. WSBCHPAJ-ELT



\$474.00
\$545.10 inc GST

- Includes the Precision Adjust Sharpener & Upgrade Kit in one bundle.
- Rod and clamp sharpener designed with ease and safety in mind.
- 15° - 30° Angle Guides
- Includes 220, 320, 400, 600 & 800 grit diamond plates, ceramic plate, leatherstrop & ceramic rod for serrations.
- 3-Year warranty

SPECIFICATIONS

- Sharpening Angles: 15° to 30° Adjustable
- Included Abrasives: Ceramic, Coarse Diamond, Fine Diamond, Leather Strop & Medium Diamond
- Abrasive Size: 1/2" x 4" Abrasive Plates

Precision Adjust Knife Sharpener

Code No. WSBCHPAJ-I

- Angles: 15° to 30°.
- Abrasives: Coarse diamond, fine diamond, fine ceramic.

\$209.00
\$240.35 inc GST



Benchtop Precision Adjust Upgrade Kit To Suit WSBCHPAJ-I

Code No. WSSA0004772



SPECIFICATIONS

- Sharpening Angles: 15° to 30° Adjustable
- Included Abrasives: Ceramic, Coarse Diamond, Fine Diamond, Leather Strop, Medium Diamond
- Abrasive Size: 1/2" x 4" Abrasive Plates

\$265.00
\$304.75 inc GST

Angle Set Knife Sharpener

Code No. WSBCHAGS-I

\$135.00
\$155²⁵ inc GST



- Angles: 15°, 17.5°, 20°, 22.5° or 25°.
- Abrasives: Coarse diamond, fine diamond, fine ceramic.
- Tapered ceramic rod for serrations.

Benchstone Knife Sharpener

Code No. WSBCHBSS-I

\$114.00
\$131¹⁰ inc GST



- 20° & 25° Sharpening guides.
- Tri-Brasive™ System - medium grit diamond, fine grit diamond and fine ceramic.
- Pivot-Response™ System follows curve of the blade.

Whetstone Knife Sharpener

Code No. WSBCHWHT-I

\$82.00
\$94³⁰ inc GST



- 17° and 20° removeable sharpening guides.
- Dual-grit water stone - 1000/6000 aluminium oxide.
- Water control base.

Guided Field Knife Sharpener

Code No. WSGFS221

\$77.00
\$88⁵⁵ inc GST



Includes: (1) Coarse Diamond Plate, (1) Fine Diamond Plate, (1) Large Ceramic Rod with 3 Positions (coarse, fine and fish hook grooves), (1) Small Ceramic Rod, (1) Leather Strop conditioned with Micro-Abrasive, Broadhead Wrench and User's Guide.

Guided Sharpening System

Code No. WSGSS-C

\$148.00
\$170²⁰ inc GST



- Pivot-Response System
- Heavy Duty manufacture
- Suitable for professionals and novices
- Easily replaceable sharpening plates & angle guides

Contents

- 17° & 20° angle guides
- Interchangeable 320 grit coarse and 600 grit fine 6" Diamond Plates
- Angle-Guided Bench Sharpener
- Angle-Guided Field Hone with a three-position ceramic rod (coarse, fine, fish hook groove), and two small diameter ceramic rods for serrations

Pivot Pro Knife & Tool Sharpener

Code No. WSHHDPVT-I

\$24.00
\$27⁶⁰ inc GST



- Compact, packable design.
- Diamond plate for edge tools.
- Sharpen on convex carbide, hone on ceramic.
- Scissors & lawn tool carbide sharpener.

Pivot Plus Knife Sharpener

Code No. WSEDCPVP-I

\$18.50
\$21²⁸ inc GST



- Sharpen on convex carbide, hone on ceramic.
- Compact, packable design.
- Diamond rod for serrations.

Pivot Knife Sharpener

Code No. WSEDCPVT-I

\$10.50
\$12⁰⁸ inc GST



FEATURES - The Pivot Knife Sharpener is a fast, easy and effective way to sharpen any knife you own. Convex carbides quickly restore a sharp edge; while the fine grit ceramic rods hone the edge to factory level sharpness. Pivot response follows the curve of the blade when sharpening making it easier and more consistent. Diamond sharpening surface is ideal for touching up knives, tools and even fishhooks.

SPECIFICATIONS

- Compact, packable design.
- Sharpen tools on diamond.
- Sharpen on convex carbide, hone on ceramic.

Economy Back Support Belts



Tuff TRADE Gear - Industrial Style Back Support provides comfortable relief from lower back discomfort.

Features

- Easy Closure
- Elastic Side Pulls
- Excellent Support
- Provides Stability

Benefits

- Smooth glide adjustable clips.
- Tapered abdominal support panels.
- 1-1/4" extra wide support elastic suspenders.
- Easy adjust elastic outer panels for added lower back support.
- Fully enclosed spring steel stays for flexible, contoured support.

TG02613M - Medium (100cm / 39") **\$23⁵⁰**(ex GST) **\$27⁰³**(inc GST)
Fits Waist: 96-104cm

TG02613L - Large (108cm / 42") **\$25⁵⁰**(ex GST) **\$29³³**(inc GST)
Fits Waist: 104-114cm

TG02613XL - X/Large (116cm / 46") **\$26⁰⁰**(ex GST) **\$29⁵⁰**(inc GST)
Fits Waist: 114-122cm

TG02613XXL - 2XL (124cm / 48") **\$27⁰⁰**(ex GST) **\$31⁰⁵**(inc GST)
Fits Waist: 122-130cm

TG02613XXXL - 3XL (132cm / 52") **\$28⁵⁰**(ex GST) **\$32⁷⁸**(inc GST)
Fits Waist: 130-138cm

Moulded EVA Foam Knee Pads

Code No. TG281602



Features:

- Made from durable moulded dense foam material
- Light-weight for all-day wear
- Adjustable elastic straps with hook and loop fasteners
- Perfect for DIY as well as the Professional
- One size fits most

Foam: 100% Ethylene Vinyl Acetate (EVA)
Lining: 100% Polyester
Elastic: 65% Polyester / 35% Elastane

**** Sold per Pair ****

\$16⁰⁰
\$18⁴⁰ inc GST

Professional Moulded Knee Pads

Code No. TG281630



\$35⁰⁰
\$40²⁵ inc GST

Features

- EVA Foam padding with a soft Gel Core.
- Industrial strength Velcro.
- Stretch fit neoprene straps with adjustable upper clips.
- Durable thick PVC shell.
- One size fits most.

Perfect for construction, flooring, and carpet installations, working on concrete and hardwood floors, welding, stocking shelves, gardening, cleaning and more.

Standard Tool Lanyard

Code No. TG5600



\$15⁰⁰
\$17²⁵ inc GST

Features:

- Shock absorbing properties reduce the dynamic force on the body or other anchor point if drop occurs
- Durable polyester elastic blended webbing extends from 94cm - 177cm
- Low profile lightweight design reduces snag hazards and added weight
- Alloy carabiner with captive eye
- Treaded loop end that grips the tool when attached
- Maximum Safe Working Capacity: 4.5kg (10.0lbs)
- Retracted Length: 37"-70" (94-177cm)
- Extended Length: 70" (177cm)
- Width: 15mm

Applications: Construction, Telecommunications, Oil & Gas, Power generation, Utilities, Wind Energy, Manufacturing, Municipalities, Scaffolding

75mm Wide Padded Comfort Belt

Code No. TG5623



\$42⁰⁰
\$48³⁰ inc GST

Tuff TRADE Gear - Premium quality 75mm padded work belt with a double tongue roller buckle.

Features

- Foam padding.
- Heavy-duty, double layer fabric will not rot, crack, harden or mildew.

Features

- Fits waist sizes: 66-116cm
- Width: 75mm (3")

9 Pocket Electricians Tool Pouch

Code No. TG141503



\$38.00
\$43.70 inc GST

Tuff TRADE Gear - 9 Pocket Electrical tool pouch combines the following features to provide the user with the best combination of functionality and toolholding.

Features

- Manufactured from polyester fabric.
- Attaches to belt with heavy duty clip or belt loop.
- Side pockets for use with screwdrivers and torches.
- Tape Sling for electrical insulating tapes.
- Webbing with reflective stripe.

21 Pocket Electricians Tool Pouch w/Shoulder Strap

Code No. TG1509



\$99.00
\$113.85 inc GST

Tuff TRADE Gear - Professional quality electrician's tool pouch with 21 pockets has a zipped, fold down cover to protect your tools, a steel hammer loop, an ergonomic rubber handle, an adjustable padded shoulder strap and an airmesh padded back panel for comfort.

Features

- 21 pockets to organise your tools and tester.
- Zipped cover to keep tools secure when not in use.
- Zipped back pocket for 200mm x 125mm pad.
- Ergonomic rubber handle and padded shoulder strap design for easy storage and the ideal way to carry loaded tool pouch.
- Outside pocket to hold cell phone and 3 outside large screwdriver holders.
- Made of 600 x 600D polyester fabric and ballistic binding.

Electricians Tool Pouch with Belt

Code No. TG5505



Tuff TRADE Gear - A premium quality electrician's tool pouch, made using durable ballistic fabric, with 12 pockets, and includes an electrical tape chain, a tape measure clip, a metal tool hook, and a padded pouch handle.

\$58.00
\$66.70 inc GST

Features:

- 3 large main pockets & 3 smaller pockets.
- 6 large screwdriver holders & 4 internal tool loops.
- Electrical tape chain and tool snap.
- Metal clip holds all measuring tape sizes.
- Double layer of rugged, ballistic poly fabric.
- Reinforced base section.

16" Open Top Centre Tray Tool Bag

Code No. TG1529



\$99.00
\$113.85 inc GST

Tuff TRADE Gear - A contractor-grade open top tool bag with a centre section dedicated for a large, multi-compartment parts tray (supplied), plus 17 pockets and sleeves, an electrical tape strap, tape measure clip, and padded shoulder strap.

Features

- Multi-compartment plastic parts tray included, 178 x 105 x 31mm
- 9 Pockets outside and 8 inside to organize a wide range of tools and accessories.
- Main pocket with web loops to accommodate large tools.
- Extra padded carrying handles and adjustable shoulder strap.
- Metal tape clip and electrical tape strap.
- Made of 600x600D polyester fabric and ballistic binding.

16" Open Top Tool Bag w/ Moulded Rubber Base

Code No. TG4516



\$99.00
\$113.85 inc GST

Tuff TRADE Gear - A premium quality open top, soft-sided tool bag which features a rubberised waterproof base (a Worksafe NZ requirement on many NZ construction sites) with an extra large centre section plus 27 pockets and 6 sleeves for ample tool storage, includes an electrical tape strap, tape measure clip, a sturdy steel bar handle with foam grip, and a padded shoulder strap.

Features

- 27 pockets inside 6 web sleeves provide storage and organisation for your favourite hand tools.
- Padded adjustable shoulder strap.
- Sturdy metal handle bar with moulded foam grip for easy carrying.
- Wide open main compartment.

24" Open Top Tool Bag w/Moulded Rubber Base

Code No. TG4524



\$106.00
\$121.90 inc GST

Tuff TRADE Gear - A premium quality open top, soft-sided tool bag which features a moulded rubber water resistant base (a WorkSafe NZ requirement on many NZ construction sites) with an extra large centre section for larger tools, 15 outer pockets and 15 inner pockets for ample tool storage. Includes an electrical tape strap, tape measure clip, a sturdy steel bar handle with foam grip, and a padded shoulder strap.

Features

- 15 outer and 15 inner pockets.
- Wide open main compartment.
- Sturdy metal handle bar with moulded foam grip for easy carrying.
- Moulded Water Resistant Rubber Base
- Padded adjustable shoulder strap.

Cooler / Chilly Bins

- High-Density Polyethylene
- Fitted with 2 x Bottle Openers
- Fully Moulded & Integrated Hinge System
- Heavy Duty Carry Handles & Drain Valve
- Food Grade Liner

Optional Accessories (Not Included)

Cup Holder

Basket for inserting into Chilly Bin



PM9450 - 25 Litre	\$199⁰⁰ (ex GST)	\$228⁸⁵ (inc GST)
PM9452 - 33 Litre	\$269⁰⁰ (ex GST)	\$309³⁵ (inc GST)
PM9454 - 47 Litre	\$299⁰⁰ (ex GST)	\$343⁸⁵ (inc GST)
PM9466 - 80 Litre	\$429⁰⁰ (ex GST)	\$493³⁵ (inc GST)
PM9468 - 110 Litre	\$499⁰⁰ (ex GST)	\$573⁸⁵ (inc GST)
PM9469 - 180 Litre	\$1099⁰⁰ (ex GST)	\$1263⁸⁵ (inc GST)



Kool Bags



- Material - 500D PVC Mesh
- Large Carry Handles
- Complete with Drain Hole
- IPX4 Waterproof Protection
- Fish Measure Along Length of the Bag

PM624060	\$299⁰⁰ (ex GST)	\$263³⁵ (inc GST)
• Size - L 1350 x H 400 x W 350mm		
PM624065	\$199⁰⁰ (ex GST)	\$228⁸⁵ (inc GST)
• Size - L 1000 x H 400 x W 350mm		
PM624070	\$189⁰⁰ (ex GST)	\$217³⁵ (inc GST)
• Size - L 750 x H 400 x W 350mm		

38L Collapsible / Stackable Chill Bin

Code No. PM9461



\$57.00
\$65⁵⁵ inc GST

The Lightweight, Foldable ICE-LESS Cooler! Keeps Food & Drinks Ice Cold For Hours!

- Extra Large Capacity - Holds up to 60 cans (38 Litres)
- Lightweight - Weighs just 0.91kg
- Ice-Less - Temperature-Lock Technology, locks in temperature for up to 10 hours
- Keeps cold foods cold and hot foods hot
- Durable Construction - Built to last, easy to clean
- Comfort-Grip Handles - Secure & easy to carry
- Collapsible and stackable for easy storage
- Dimensions - H 260 x W 600 x L 400mm

Inflatable Tenders



- Material: 0.7mm PVC
- UV Protected
- Approved to CE Standards

Includes:

- Air floor
- Aluminium Oars x 2
- Foot Pump
- Carry Bag
- Seat
- Towing Eye
- Repair Kit

PM92200 – 2.0m **\$759.⁰⁰** (ex GST) **\$872.⁸⁵** (inc GST)

- Dimensions: L 2.0 x W 1.3m
- Tube Diameter: 340mm
- Max. Person: 2
- Max. Weight Capacity (2 person + motor + luggage): 300kg
- Recommended Max Outboard Motor: 3HP
- Net Weight: 22kg

PM92210 – 2.4m **\$990.⁰⁰** (ex GST) **\$1138.⁵⁰** (inc GST)

- Dimensions: L 2.4 x W 1.3m
- Max. Person: 4
- Max. Weight Capacity (4 person + motor + luggage): 360kg
- Recommended Max Outboard Motor: 5HP
- Net Weight: 25kg

PM92220 – 2.7m **\$1238.⁰⁰** (ex GST) **\$1423.⁷⁰** (inc GST)

- Dimensions: L 2.7 x W 1.5m
- Tube Diameter: 420mm
- Max. Weight Capacity: 480kg for 3-5 Adults
- Recommended Max Outboard Motor: 8HP
- Net Weight: 41kg

Inflatable Foot Pump

Code No. PM92206

\$33.⁰⁰
\$37.⁹⁵ inc GST



Complete with ononet to suit halkey roberts valves, common on most inflatable Dinghies & Stand Up Paddle Boards.

Sleeve Type Dry Bag Protector



- 250D Water Resistant Tough PVC material
- Roll top design with RF welded seams
- Easy breakaway buckle enclosure with shoulder strap
- Waterproof and Lightweight

PM9410S – 10L **\$15.⁵⁰** (ex GST) **\$17.⁸²** (inc GST)

PM9420S – 20L **\$19.⁰⁰** (ex GST) **\$21.⁸⁵** (inc GST)

Backpack Type Dry Bag Protector



- Lightweight Compact & Durable
- Easy Operation & Cleaning
- Waterproof
- Versatile

PM9418B – 18L **\$48.⁵⁰** (ex GST) **\$55.⁷⁵** (inc GST)

- 250D Water Resistant Tough PVC Material
- IPX6 Waterproof Protection
- Handgrip & Two Shoulder Straps
- Overlapped Main Lid with Weather Resistant Zippers
- 7 Pockets & 3 Zippers

PM9430B – 40L **\$65.⁰⁰** (ex GST) **\$74.⁷⁵** (inc GST)

- 500D water resistant tough PVC material
- Solid roll-top closure system provides secure watertight seal
- Easy breakaway buckle enclosure with handgrip & two shoulder straps
- The dry sack can float on water after rolled and buckled, so you can track your gear easily

nomadiQ

bbq everywhere

The Ultimate Lightweight Portable Gas BBQ

Part No. NOMADIQBBQ



Lightweight

Weights a mere 5.6kg!
No more lugging around a heavy BBQ.



Non-stick Grills

Ceramic coated cooking grills are non stick, rust resistant, dishwasher safe and easily removed.



Huge Cooking Surface

Classic leading 24cm x 24cm cooking area.



Contents

Portable BBQ, Drip Trays (2), Carrying Strap, Gas Connector with Hose & Regulator



**New Zealand & Australia
Gas Safety Certification**



Ultra Portable

Unique folding design with handy carry straps turn it into a small bag to carry anywhere.



Super High Power

Reaches and incredible 325° on both griddles in only 2-3 minutes.



Dual Temperature Controls

Complete with individual temperature controls for each grilling side. Sear on one side and slow cook on the other!



5 Year Warranty

Full 5 year manufacturer warranty against rust, burn through or component failure.

QUICK EASY SET-UP



Gas Canister
Not Included

\$477.00
\$548.55^{inc GST}

ACCESSORIES

FLAT PLATE

Part No. NOMADIQ-FLAT PLATE



\$69.00^{inc GST}
\$79.35^{inc GST}

- Material: Lightweight metal and with a durable enamelled non-stick coating
- Dimensions: Approx. 25cm x 31cm

ADAPTOR 1M x 1"

Part No. NOMADIQ-ADAPTOR



\$44.00^{inc GST}
\$50.60^{inc GST}

- Adapter to go from the BBQ to a LPG gas bottle

20L COOLING BAG PACK

Part No. NOMADIQ-COOLER



- Dimensions: Approx. 35 x 18 x 55cm
- Material: Laminated Polyester / PEVA

\$69.00^{inc GST}
\$79.35^{inc GST}

Bonus Cover Valued at \$29.95



LIMITED TIME ONLY

Hibachi Table Top Grill with Tongs

Code No. HIBACHIGRILL



Features & Specifications

- Japanese Style Grilling
- Savour the Rich Flavours of Charcoal
- The Ceramic Body Retains Heat for More Efficient Grilling
- Portable & Compact - Perfect for Home, Camping & Picnics
- 2 x Cool-to-Touch Side Handles
- Stainless Steel 304 Food Grade Cooking Grate
- 2 x Charcoal Chambers with Metal Air Control
- Elevated Design Helps Minimise Heat Transfer
- Dimensions: 390 x 220 x 170mm
- Weight: 8kg

Operation

- When grilling, ensure the metal core plates are in place. Insert charcoal into the ceramic body, and stack effectively.
- Place your fire starter of choice into the vent opening at the front of the unit. Use a gas lighter to light the fire starter to ignite the charcoal and allow to heat before use.
- When done, ensure the charcoal has cooled down naturally then empty out the ceramic body and clean sufficiently before next use, do not use water to clean even when cold.

\$77.00
\$88.55^{inc GST}

www.isl.nz

Stores advertised on this page of this catalogue are independent businesses. Every effort is made to ensure advertised stock is available, but due to factors beyond the control of ISL Industrial Limited (Importer), not all products in this catalogue are available at all stores. Prices for the products are recommended only. Regular prices may vary from store to store, the catalogue pricing is calculated in good faith as the average price at the time of preparation. ISL Industrial Limited (Importer) reserve the right to correct printing & pricing errors. **Additional freight charges may apply if product is ordered in.** All sizes shown are approximate only. Accessories shown do not come with product unless otherwise specified. Due to printing process, colours in this catalogue may vary slightly to actual item. ISL Industrial Limited (Importer) will do everything possible with in reason to maintain stocks of products advertised but cannot be responsible for unforeseen shortfalls beyond their control. Reproduction in whole or part is prohibited without written approval © 2022. E & OE.